



PARISH POST

*Wapping Community Church, United Church of Christ
No matter who you are or where you are on life's journey,
you are welcome here!*

April, 2026

Please Join Us for Holy Week Services

- Sunday, March 29** Palm Sunday Services, 8:30 & 10 a.m., in WCC Sanctuary
Intergenerational Lunch & Hike after 2nd service at Major Donnelly Preserve, 1165 Sullivan Ave., South Windsor
- Thursday, April 2** Maundy Thursday Service, 7 p.m. Community Room
- Friday, April 3** Good Friday Service, 12 p.m., Sanctuary
Walk the Labyrinth, 12 - 7 p.m., Community Room
SPF Good Friday Vigil, 8 p.m. - 12 a.m.

Easter Sunday Services:



Sunrise Service, 6:30 a.m., at Major Donnelly Preserve, 1165 Sullivan Ave., South Windsor

Sunday Worship Services, 9 a.m. & 11 a.m., in the Sanctuary at Wapping Community Church



**Youth Sunday was March 15
Our senior youth led the service, played music and choreographed a final dance.**

Go to www.Wapping.org to see the entire service, or go to our Facebook page to see the final dance:

www.facebook.com/WappingCommunityChurch

Wapping's Senior Youth Group (SPF) posed in the sanctuary after participating in Youth Sunday on March 15. We are so proud of this great group of spirited, talented young people!



The Jolly Beggars Musical Group Played Beautiful Irish Music on Sunday, March 22

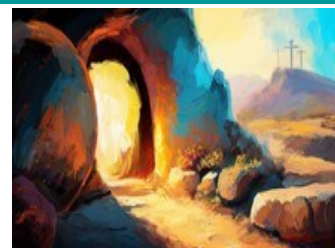


The Girl Scouts Helped with the Service on March 8, Girl Scout Sunday



April Calendar

Thurs., April 2 **Maundy Thursday—Walk the Labyrinth, 2-7 p.m.**
Maundy Thursday Service, 7 p.m., Community Room
Choir Rehearsal, 7 p.m., Fellowship Hall



Fri., April 3 **Good Friday Service, 12 noon, Sanctuary**
Walk the Labyrinth, 8 a.m. - 7 p.m., Community Room
SPF Good Friday Vigil, 8 p.m. - 12 a.m.

Sun., April 5 **Easter Sunday Services:**
Sunrise Service, 6:30 a.m., at Major Donnelly Preserve,
1165 Sullivan Ave., South Windsor
Easter Sunday Worship Services, 9 a.m. & 11 a.m., Sanctuary

Mon., April 6 **Church Office Closed**

Wed., April 8 **Foreign Policy Discussion, 7-9 p.m., Youth Room**

Thurs., April 9 **Foodshare Mobile Pantry, 11:30 a.m., WCC Parking Lot**

Sun., April 12 **One Worship Service Only, 9 a.m., A Service of Easter Hymns & Stories**
(Rev. Mark Abernethy away)

Thurs., April 16 **Choir Rehearsal, 7 p.m., Fellowship Hall**

Sun., April 19 **Worship Services, 8:30 & 10 a.m.**
JPF/SPF Youth groups, 4-6 p.m., Youth Room



Tues., April 21 **Prayer Shawl Ministry, 10 a.m., Earle Smith Reception Room**
Deacon's Meeting, 7 p.m., Youth Room
Outreach Meeting, 7 p.m., Earle Smith Reception Room

Thurs., April 23 **Foodshare Mobile Pantry, 11:30 a.m., WCC Parking Lot**
Men's Choir Rehearsal, 7 p.m., Fellowship Hall

Sun., April 26 **Worship Services, 8:30 & 10 a.m.**
Confirmation Class, 8:30-10 a.m., Youth Room

Wed., April 29 **Foreign Policy Discussion Group, 7-9 p.m., Youth Room**

Thurs., April 30 **Men's Choir Rehearsal, 7 p.m., Fellowship Hall**

Save the Dates: **Sat., May 2 - Bottle & Can Drive, 10 a.m.- 2 p.m., WCC Parking Lot**
Sat., May 9- MACC Volunteer Saturday, 1-5 p.m., 466 Main St., Manchester
Sun., May 10 - Mother's Day Service, Men's Choir, 8:30 & 10 a.m.
Wed., May 13 - SPF Fundraiser at Red Robin , 4 - 9 p.m.

Outreach Hosted a Successful Mac & Cheese Community Spring Dinner on for More than 200 Guests on Friday, March 20



Spring Has Officially Arrived!

We are truly grateful for the support of our families and friends as we continue nurturing faith together. Thank you for bringing your children to church each Sunday. It is a wonderful opportunity for them to grow in their understanding of faith and community. March was a busy and fulfilling month for us. We were blessed to enjoy two meaningful Children's Messages. A special thank you to our talented high school students, who taught us about faith through the story of Jesus and Peter walking on water (Matthew 14:22-33). Abi Levesque also shared a beautiful and engaging message about prayer. Throughout the month, we continued learning the Lord's Prayer, we'll parade behind the donkey to recreate Jesus' entry into Jerusalem, we'll explore the meaning of Holy Week, and we gathered together for a delicious mac & cheese community dinner. It truly is a blessing to come together as one community!



Erin Murray
Church School
Coordinator



March - June Lenten Mission

Faith Formation is once again collecting gently used or new items of clothing for Cornerstones "back to school shop!" (K-12 grades). This year they would really appreciate sweat pants and or lounge pants for middle schoolers and high schoolers (think comfy!) There will be a marked bin for donations outside of the sanctuary. Donations will be accepted between now until June. If you have any questions please feel free to reach out to Jen DeCormier or email her at jjbinvt@gmail.com



Children's Message in March: Abi Levesque (above) shared a thoughtful Children's Message on prayer, reminding us all of the power of talking with God.



We are so grateful to our Senior Pilgrim Fellowship for sharing a beautiful Children's Message on Youth Sunday centered on faith.

April Church School:

Easter Sunday, April 5th:

Easter Sunrise Service: 6:30 a.m.

Easter 9 a.m. & 11 a.m. Children's Messages

Sunday, April 12th: One service at 9 a.m. "Breakfast on the Beach" John 21: 1-17

Vacation Bible School Planning Meeting at 11:15 a.m. - All are welcome to join us!

April Church School (continued)

Sunday, April 19th: "The Road to Emmaus" Luke 24:13-35

Join us at 11:15 a.m. for our Vacation Bible School planning meeting - Everyone is welcome!

Sunday, April 26th: "Early Believers" Acts 2:43-47; 4:32-37

Help shape the year ahead! Join our Faith Formation meeting at 11:15 a.m.- All are welcome.

Our “Jesus Goes With Us” Plushy Jesus Initiative

This is a shared faith practice designed to help children recognize that Jesus is present not only at church, but in their everyday lives. Each week, a child brings home a plush Jesus along with a simple journal, inviting families to pause and notice moments of kindness, love, fairness, and care throughout their week. Through drawing, writing, or conversation, children reflect on where they experienced Jesus with them - at home, at school, or with friends.

When Plushy Jesus returns to church, children are invited (but never required) to share a small part of their experience. This initiative is not homework, but a gentle, meaningful way to help children understand that faith is lived daily and that Jesus goes with them wherever they are.



Plushy Jesus has been out and about, joining our families in their everyday adventures - reminding us that Jesus goes with us wherever we are.

Vacation Bible School 2026 - Camp Firelight

We are already planning for VBS! We're excited to introduce a new middle school experience this year:

God's Violet Wings of Faith (Grades 6–8) - This unique group is designed especially for our older youth and will include:

Age-appropriate **STEAM activities** that build creativity and collaboration

- **Faith-centered discussions** geared toward middle schoolers
- **Mission and service opportunities**, including helping within VBS

This program offers a fun, engaging, and purposeful experience while building community among our middle school youth.

- **Registration is LIVE!** [Ages 4 (must be potty trained) through entering Grade 8)
Volunteers needed: Incoming 9th grade through adults (email Erin wappingfaith@gmail.com)
- We are still in need of Bible Storyteller and Group Leaders.



VBS Donations Needed:

VBS Amazon Wish List: Help support crafts, snacks, decorations and mission projects. Look for an email with the link to donate! Thank you.

VBS Dates: June 22–26 | 9:00 a.m. – 12:30 p.m.

Thank you to those who have already registered—we are more than halfway full!

T-Shirts: Included for all children registered and paid by **April 1**

BOTTLE & CAN DRIVE

Benefiting Hartford Scouting Programs



Saturday, May 2ND
10:00 AM - 2:00 PM

Wapping Community Church

1790 Ellington Road, South Windsor, CT

(Parking lot adjacent to the Town Library - Use Sullivan Ave entrance!)

Please come out and donate your redeemable
bottles and cans to support the activities of:
Hartford Boy Scout Troop 2, Girl Scout Troop 10036, & Cub Scout Pack 2!

CASH DONATIONS WELCOME!

Checks may be made payable to:
HARTFORD KIWANIS FUND, INC.
P.O. Box 1167, South Windsor, CT 06074
Hartford Kiwanis Fund, Inc. is an IRS 501(c)3 nonprofit

For more information about this event, or about the mission of
Hartford Kiwanis' Suburban Hartford Initiative Program, please contact:
Peter DeMallie | (860) 922-0920 | pdemallie@dpinc.co
Daniel Jameson | (860) 752-3499 | djameson@dpinc.co
Ken Johnson | (860) 841-6041 | kjkj3@att.net



Donations are tax deductible!

Confirmation Class News

Confirmation Class News

As part of Wapping's year-long confirmation program, we have the youth attend two different places of worship to expose them to different religions. In March we were graciously welcomed at the **Liberty Christian Center in Hartford** (right), and in the November we visited **Temple Beth Hillel in South Windsor**.

Another part of the program requires class members to participate in two service projects. The class recently attended a volunteer activity at **Midwest Food Bank** in Manchester.

Also, the class collected funds and coordinated the purchase of new mattresses for **Journey Home**, an organization that helps individuals and families transitioning from homelessness.

We were able to supply six twin beds and two queen beds. Participants worked at a "Move-In Day" event where they carried furniture and household items into apartments that Journey Home was setting up. Thanks to everyone who contributions to the purchase of the mattress-



Confirmation Class Attended Liberty Christian Center in Hartford (above)

Students Helping with "Move-In Day" in Hartford and East Hartford



WCC's Confirmation Class Participated in Journey Home's "Move-In" Day in East Hartford and Hartford on Saturday, 3/21.



An Eye-Opening Experience

Confirmants and advisors pitched in to help two families move into long-term apartments and experienced some powerful emotions.

Lily Donovan observed, "Journey Home opened my eyes to how different people's living situations can be. It felt really meaningful to help families move and have a fresh start. We saw how much it meant to them."

Kaylee Morgenthau remarked, "It was truly an enlightening experience, getting to see the terrible conditions that real people are living in, and knowing that I was able to help."

JPF April Schedule

Sunday April 19th from 4-6 p.m. We will meet at church for an **“Unbirthday Party.”**

We'll have a cake decorating contest and some games. Come and show everyone your artistic talent!



Fun & Fellowship Game Night

We'll hold a “Game Night,” Saturday, April 11, from 4-7 p.m. in Fellowship Hall. Bring your favorite game and snacks! Please RSVP to Len Dion at Lenandsandi@yahoo.com or call Len Dion at 860-254-5129. Hope to see you!



Spring Cleaning Reminder

As we clear out our winter coats for the season, please remember that throughout the year WCC accepts clean, new or gently used winter coats, hats, scarves and gloves for our **Annual Foodshare Holiday Luncheon** in December. Please leave your donations on the table in the Caring Ministry Room next to the church library on the second floor.



Girl Scout Sunday Church School Activity



Church Staff

Ministers, all of the Members of the Church

- Rev. Mark B. Abernethy, Senior Minister
- Maria Centola, Director of Music Ministry
- Kathy Brady, Office Administrator
- Erin Murray, Church School Coordinator

Phone: 860-644-0833

Email: Wappingoffice@gmail.com

1790 Ellington Road, South Windsor, CT 06074

Website: www.Wappingchurch.org

www.facebook.com/WappingCommunityChurch

Budget Corner February 2026:

Here is the church's income, our expenses, and how the figures match the budget set at the beginning of the year. Here are February's figures:

	<u>Income</u>	<u>Expenses</u>
Actual:	\$77,365	\$76,357
Budget:	\$79,601	\$77,069

Today's Factoid - Did you know? The “Budget” projected values are based on the averages over several years adjusted for the deficit.